

Wardrobe and Stitcher Portfolio

Summer Wasung

Frozen – Wardrobe Crew



Overdress, coronation overskirt, and cape



2. Overdress being removed to turn into a bustle



3. Act 2, bustle removed, second cape added

- ❖ Primary crew for Elsa presets and quick changes
- ❖ Presets and full quick changes for 5 ensemble members
- ❖ Took on temporary role of wardrobe supervisor
 - taking notes for paperwork updates and appropriate track changes
 - Developing preset organization backstage, like labeled chairs and advocating for installing additional racks.

Elsa was rigged for an onstage reveal during Let it Go. An over-dress with magnetic front closures was quick changed into and then quick changed to undress the skirt and corset which attached to create a bustle during the song.

Cast size: 20

The Cherry Orchard – Wardrobe Crew Head



- ❖ Cast of 19
- ❖ Managing two wardrobe crew members
- ❖ Historical garment maintenance
 - Patching and reinforcing vintage lace with crepeline
- ❖ Toy Squeakers in shoes, replaced and secured every night
- ❖ Quick changes involving vintage garments
- ❖ Nightly assembly and disassembly of the quick change booth

Cast size of 19

Guys and Dolls – Wardrobe Crew



My responsibilities included:

- ❖ Button Down Shirt Ironing
- ❖ Male Ensemble Dressing Room: Check in, presets, & laundry.
- ❖ Male Ensemble feature character quick changes
- ❖ Havana female ensemble quick changes
- ❖ *Take Back Your Mink* change outs
- ❖ Hat and Coat Preset for *The Crapshooter's Dance*

Cast size of 25

42nd Street – Wardrobe Crew Member



Preset Rack organized by performer and chronologically



Wardrobe Crew Photo in Makeshift dressing room

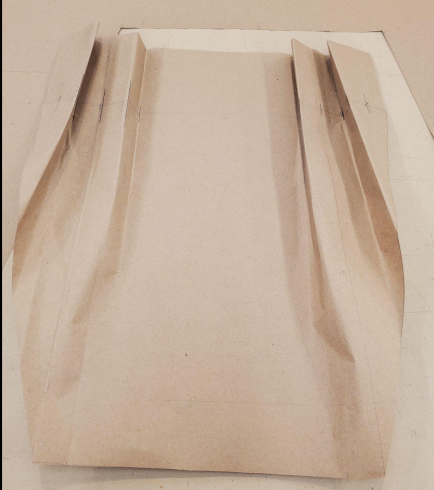
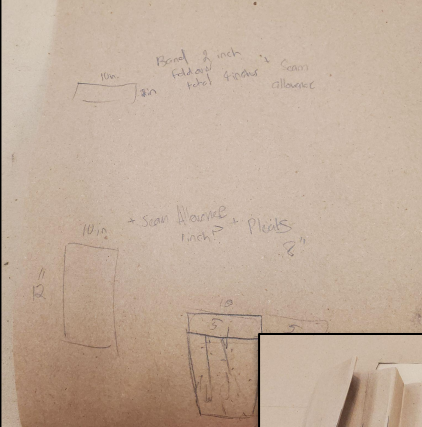


- ❖ Quick-rigging button ups
- ❖ Stage left presets on rack, wigs, hats, and shoes, on chairs and hooks I labeled for performers
- ❖ Male Ensemble feature character quick changes
- ❖ Julian Marsh stage left changes
- ❖ Dorothy Brock stage left changes
- ❖ Wig and gown changes of the female cast in Dames
- ❖ *Shuffle Off to Buffalo* female ensemble quick changes
- ❖ Half of Cast quick change into 42nd Street
- ❖ Set up and take down of makeshift dressing room

University Production's Costume Shop

Stitcher and Draper's Assistant

Pockets: Pattern drafting, cutting, construction, & decorative sashiko stitching for Arbor Falls

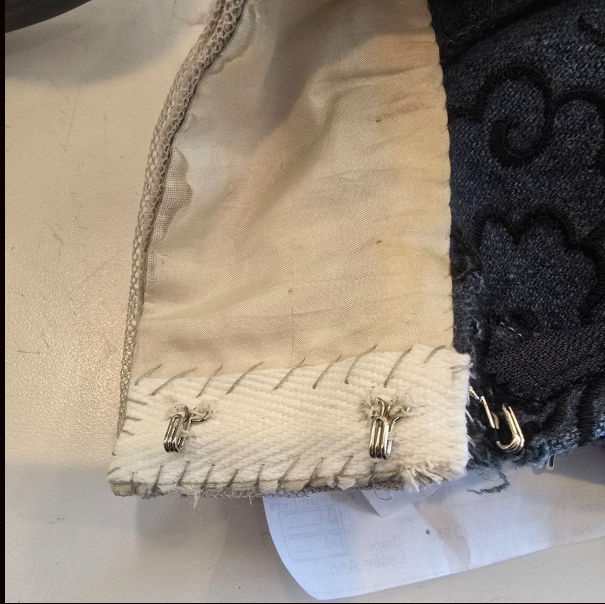


Lace Cuff for Hansel & Gretel



- ❖ Sleeve gathering
- ❖ Construction and attachment of cuff with elastic channel
 - Half machine, half slip stitch
- ❖ Attachment of lace

Reinforcing Vintage Garment Closures for *A Little Night Music*



20th Cent. Gathered Sleeve for Little Night Music

- Pattern drafted
- Created a mock up
- Gathering on final sleeve



Relevant Coursework

Vintage Skirt Resizing & Construction – Costume Construction Class



- ❖ Small, vintage pattern resized for plus sized measurements
- ❖ Zipper installment
- ❖ Shaped waistband
- ❖ Pattern matching

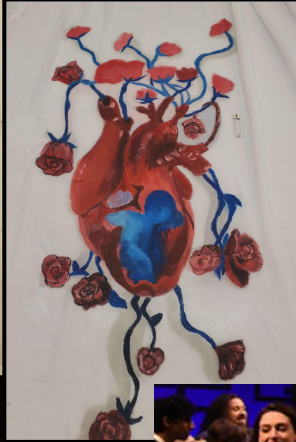
Mask Making



- ❖ Mold making
- ❖ Casting
- ❖ Sculpting
- ❖ Worbla shaping

Crafts/
Makeup

Everybody – Assistant Costume Designer



Being ACD on this production included participating in fittings, swatching fabric, crafts artisan work, and paperwork creation/maintenance



- ❖ Pattern drafting for large scale jacket embellishment
- ❖ Pattern drafting for a painted emblem on Love's Dress
- ❖ Hand painting the Emblem on Love's Dress

SFX Makeup



Flesh
Scarecrow



Zombie



Healing Bruise



Aging Scar

The Thanksgiving Play - Costume Designer



“Two Little Indians”
Headdresses

Being the costume designer on this production included sourcing and altering modern garments and crafting script specific accessories.



Turkey Headbands



“Don't Trust The Pilgrims” Rock Vest